

**MAKE
THE
POSSIBILITY**



JEMT Co., Ltd

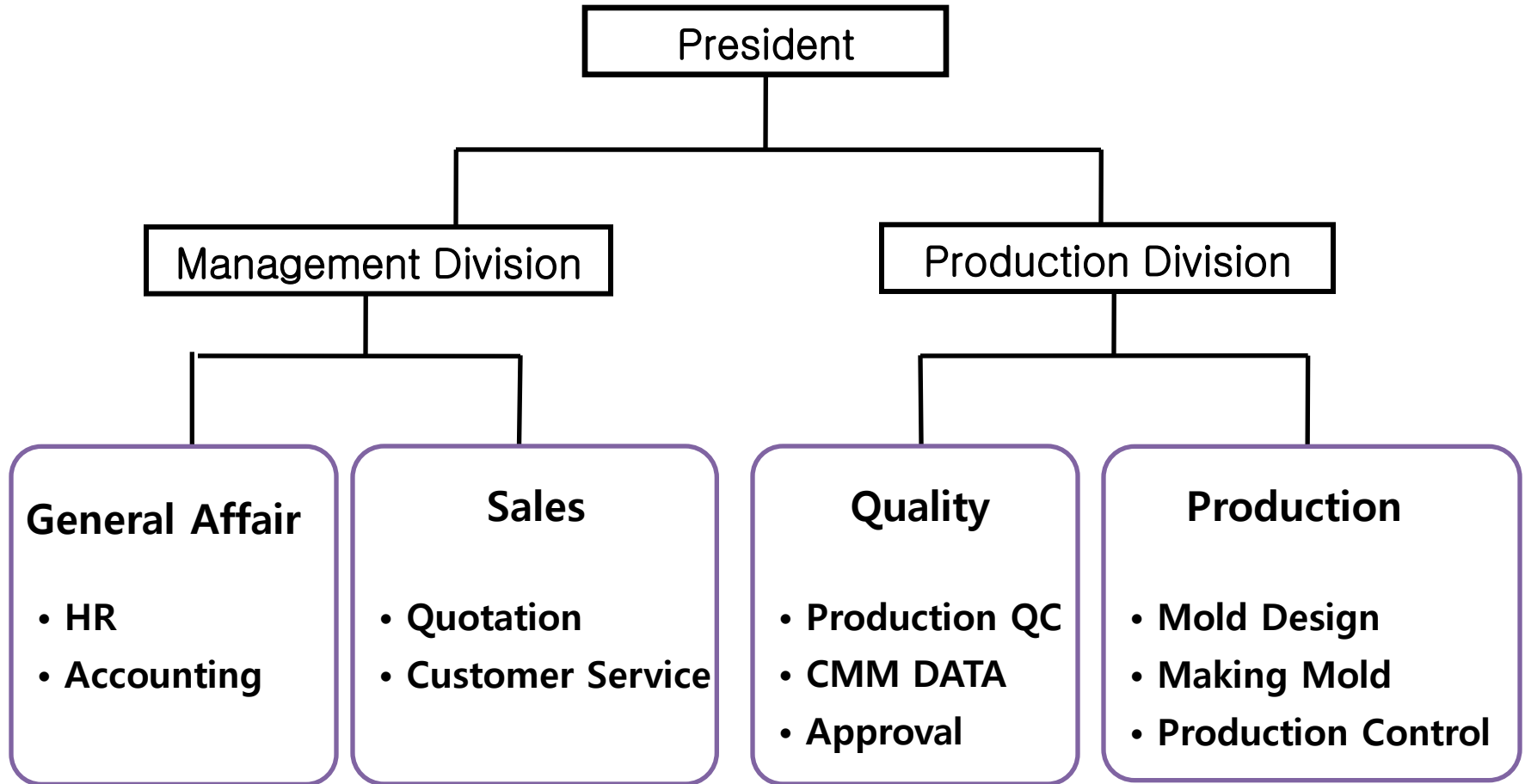
Company overview

Company name	JEMT Co., Ltd
President	Mr. Sang-Uk, Han
Foundation Date	Mar 25 th , 2003 Jo Eun Mold Tech Mar 25 th , 2006 JEMT Co., Ltd.
Business Items	Manufacture Mold & Manufacture Plastic Injection
Location	621-34, Noha-ri, Paltan-myeon, Hwaseong-si,
Mold Dept	Gyeonggi-do, Korea (Area 3,300m ² / B'g 2,000m ²)
Injection Dept	450-25, Noha-ri, Paltan-myeon, Hwaseong-si, Gyeonggi-do, Korea (Area 2,400m ² / B'g 1,000m ²)
Web Site	www.jemt.co.kr
Contact Point	+82 31 354 9263, +82 10 2377 3032

Company History

- 2003.03 Jo Eun Tech **Company established**
- 2003.12 Acquired ISO9001/ 14001 (IAF)
- 2004.06 Acquired SSQ By Ssangyong
- 2006.03 Changed to a Corporation &
Company name to JEMT Co,Ltd
- 2006.11 Acquired S.Q by Hyundai & Kia
- 2008.04 Capital Increase (US \$690,000)
- 2009.03 Moved head Quarter to Noha-ri
- 2010.08 Acquired GMK G.P.P.C (1500TON)
- 2012.01 **Extends the test injection plant**
(1800,1300,750,450,250 Ton)

Organization



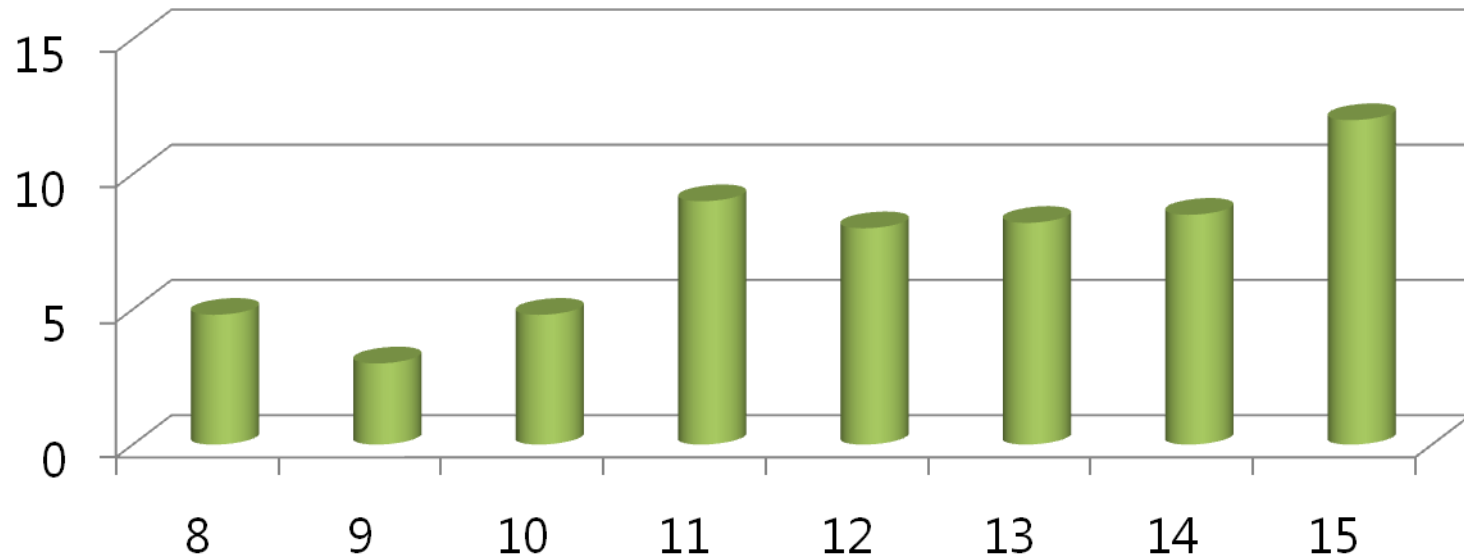
Turnover Trend & Target

Rate: US 1\$ = KR ₩1,000

Unit: US Million dollars

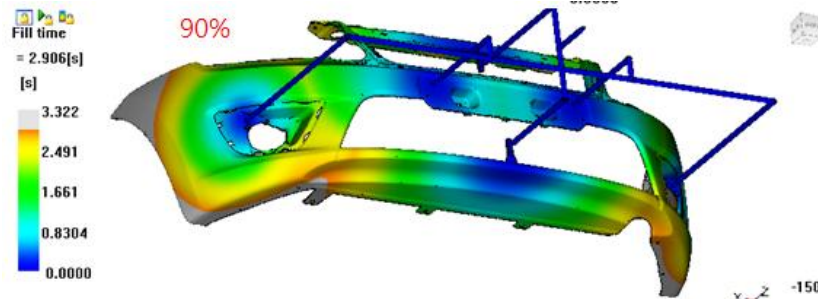
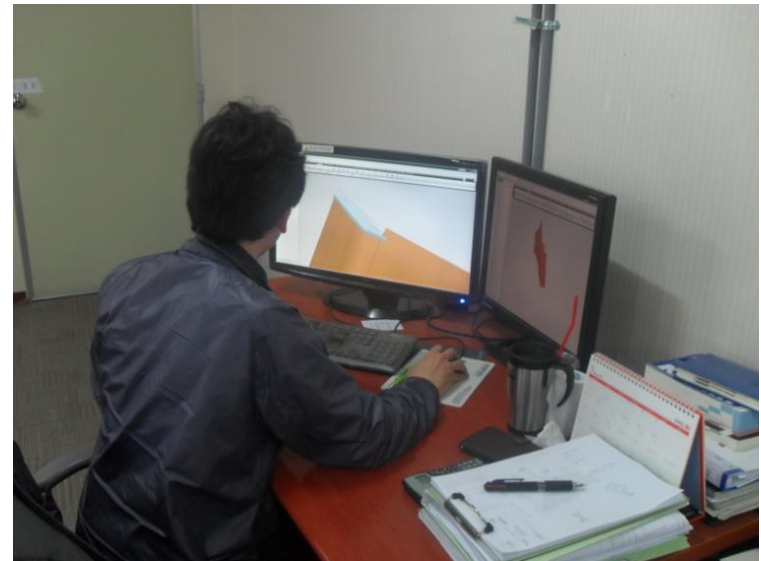
Year	'08	'09	'10	'11	'12	'13	'14	'15
Amount	4.8	3.0	4.8	9.0	8.0	8.2	8.5	12

US Million dollars



Engineering Ability

- UG 7.5 6 set
- Auto Cad 6 set
- Mold Flow 1 set
- Power Mill v.11 5 set
- Cad Max 4 set



Main Tooling Equipments

Name	Size	Qty	Company	Date of purchase	Remark
CNC M/C	SIRIUS-25	1	K/Whacheon	2014.10	IP,Bpr 가공 가능
CNC Horizontal Boring M/C	KURAKI KBT-13E-A	1	J/Kuraki	2015,5	IP,Bpr 가공 가능
CNC M/C	SIRIUS-12	1	K/Whacheon	2011.10	
CNCM/C	SMART-Ua 20,000	1	K/Whacheon	2014,10	Graphite
CNC M/C	9	1	K/Doosan	2005.07	
CNC M/C	7	1	K/Doosan	2004.01	
CNC M/C	5	1	K/doohan	2005.01	
CNC M/C	6	1	K/Whacheon	2007.05	Graphite
CNC EDM M/C	Big	1	J/MAKINO	2012.12	
CNC EDM M/C	Big/Medium	2	K/Daehan EDM	2007.11	2-Head M/C
CNC EDM M/C	Small	1	K/Daehan EDM	2003.04	
Milling	HMT-1100T	2	K/Whacheon	2003.03	
LATHE	HL-380	1	K/Whacheon	2006.01	
Grinding M/C	HIL-G-501	1	Hanil	2003.03	
Die Spot	200TON	1	K/Gukdong	2007.10	
Die Spot	400TON	1	K/CMTI	2014,10	
Cmm M/C	MHB	1	K/Duk in	2011.04	
Radial M/C	DRD-1100	1	Doosan	2003.06	
Crane	25+5TON ETC	9	Semo	2005.05	
Injection M/C	250/450/700/1300/1800TON	5	LS/Mitsubishi/ woojin	2014.06	For Trial

Main Tooling Equipments

NC 2500



Tooling Shop

NC 2500



Assemble Shop

2 Head EDM M/C



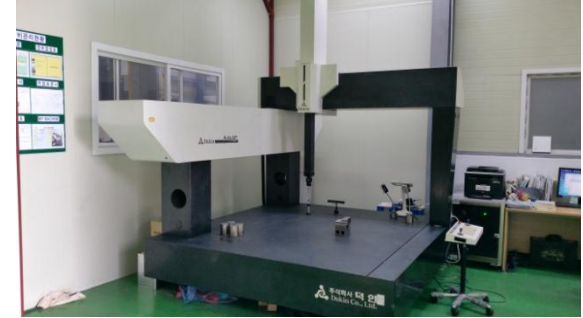
CMM M/C



Injection M/C (1800 Ton)



Die Spot(400 Ton)



Die Spot(400 Ton)



Customers

Korea Hyundai/KIA. GMK, RSM, Ssangyong, Visteon

NS-Auto, Woo Kyung Mit, Seco

KB Auto Tech, Yong San



India Tata, Visteon

Europe Antolin,



Russia ABTOBA3

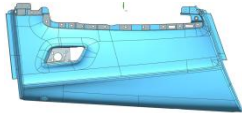


Interior parts

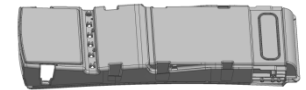
A/REST CARRIER



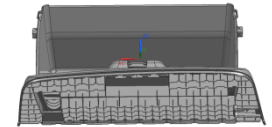
RR S/D MAIN UPR



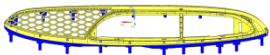
MAIN-FRAME



GLOVE BOX



RR SUBSTRATE



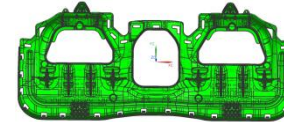
CONSOLE



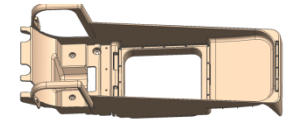
ROOF CONSOLE



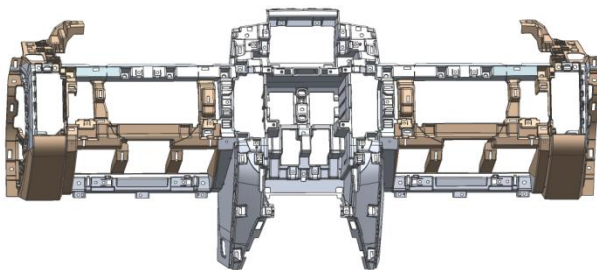
BENCH



SKI-BOARD



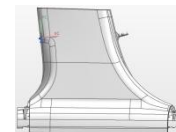
DASH BOARD



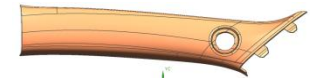
Q'TR TRIM



CTR-PILLAR LWR

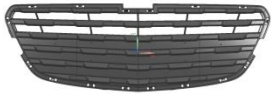


FRT-PILLAR



Exterior parts

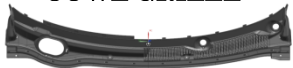
RAD.GRILLE



FRT SKID PLATE



COWL GRILLE



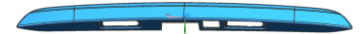
FOG HOUS'G



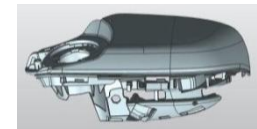
Frt Bumper (Hidden Parting)



CR. TRUNK END



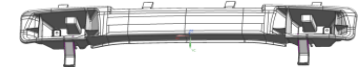
MIRROR HOUSING



RR BPR LOWER



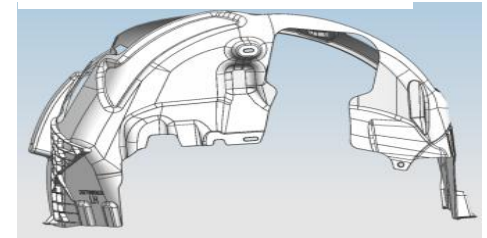
RR IMPACT BEAM



SIDE MOLDING



FENDER LINER

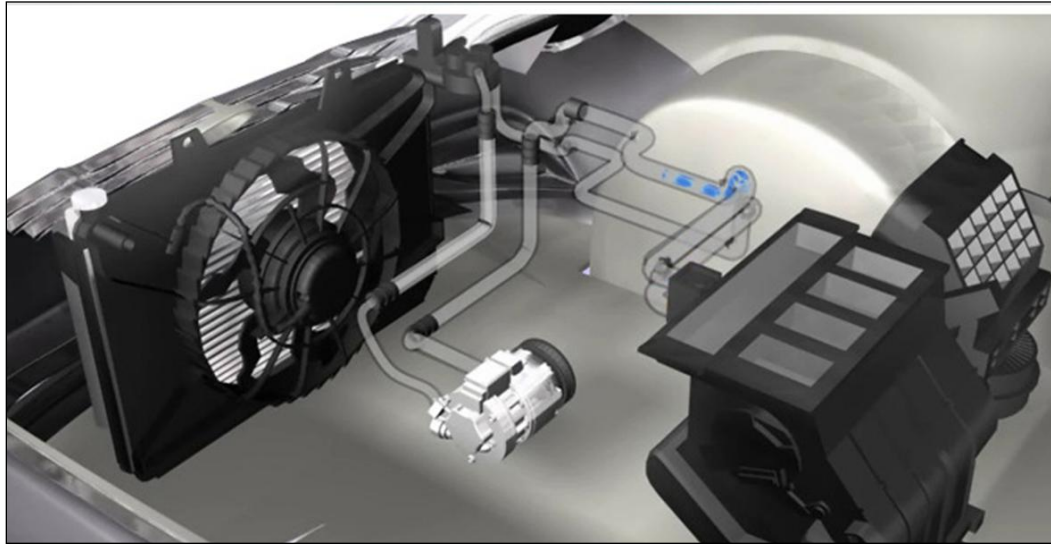
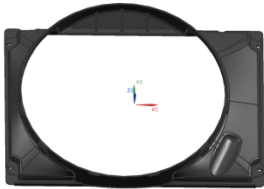


Air Conditioning Parts

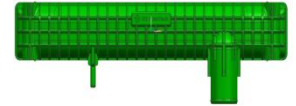
FAN



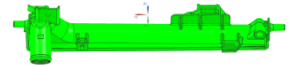
SHROUD



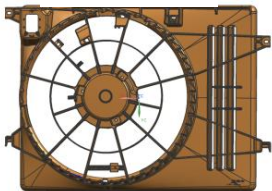
UPPER TANK



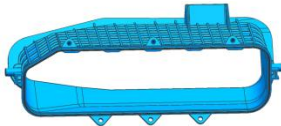
RAD. TANK



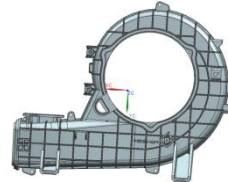
SHROUD



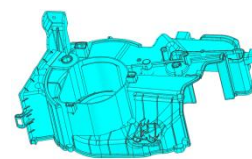
CASE DUCT UPR



CASE LWR BLOWER



CASE HEATER



CASE LWR FILTER



GLOVE BOX

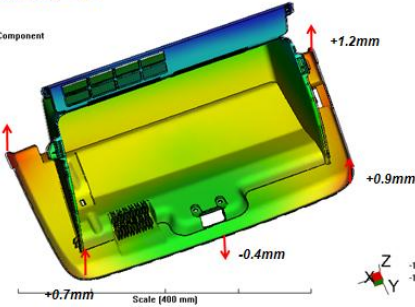
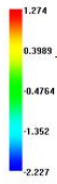
● T300 GSUV (GMK)

Deflection Z (Scale Factor = X1)

Case 1

Deflection, all effects: Z Component
Scale Factor = 1.000

[mm]

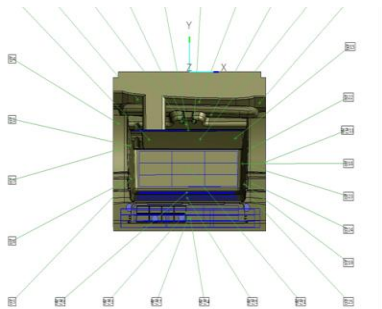
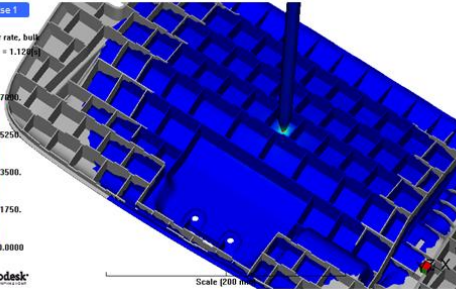
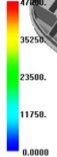


4) Shear Rate, Bulk

Case 1

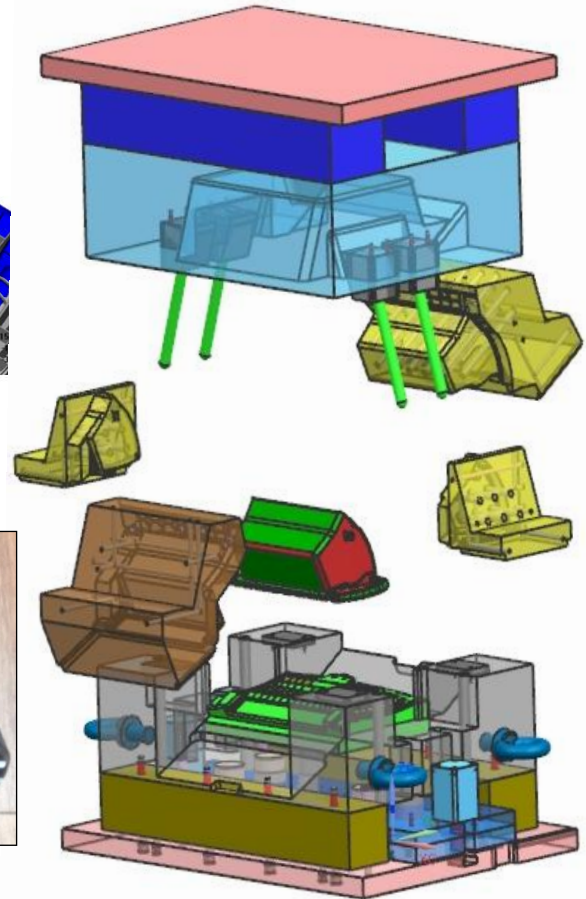
Shear rate, bulk
Time = 1.12500

[1/s]



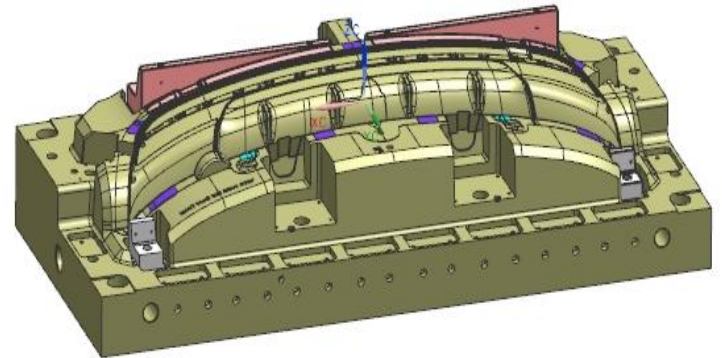
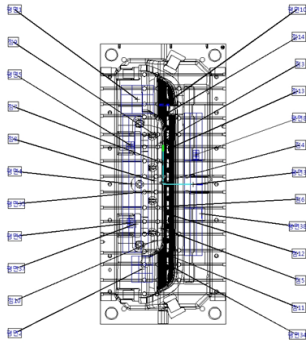
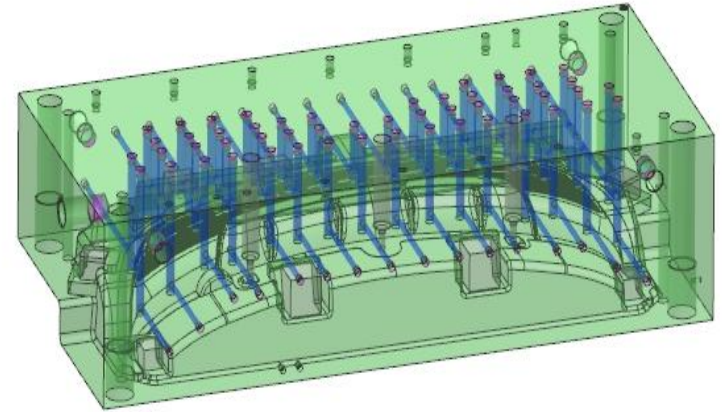
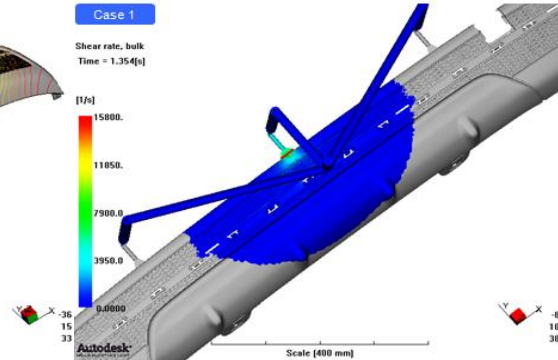
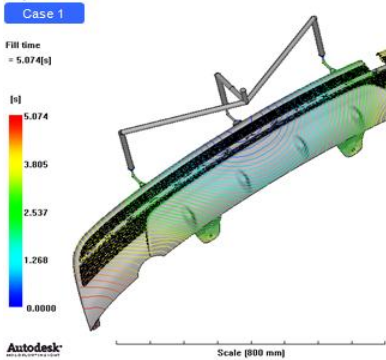
No.	Item	Actual	Nominal	Up Tol	Low Tol	Deviation	Evaluation
곡면1	Z	194.9820	194.9580	0.0300	-0.0300	0.0230	++++
	X:Z	0.0010	0.0000	0.1000	-0.1000	0.0010	+
	Y:Z	-0.0030	-0.0020	0.1000	-0.1000	-0.0010	-
곡면2	Z	43.4880	43.4640	0.0240	-0.0240	0.0040	+
	X:Z	0.0040	0.0000	0.1000	-0.1000	0.0040	+
	Y:Z	-0.0040	-0.0000	0.1000	-0.1000	-0.0040	-
곡면3	Z	41.8510	41.8270	0.0240	-0.0240	0.0240	----
	X:Z	0.0010	0.0000	0.1000	-0.1000	0.0010	+
	Y:Z	-0.0010	-0.0000	0.1000	-0.1000	-0.0010	+
곡면4	Z	-20.9540	-20.9300	0.0240	-0.0240	0.0240	+
	X:Z	0.0010	0.0000	0.1000	-0.1000	0.0010	+
	Y:Z	-0.0010	-0.0000	0.1000	-0.1000	-0.0010	+

GMM
Measuring



RR BUMPER LOWER

● J-300 (GMK)

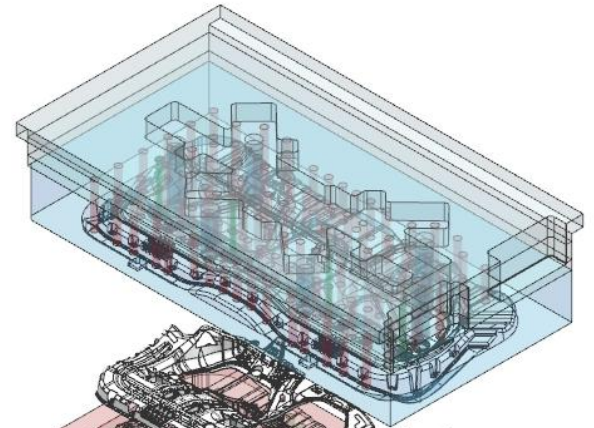
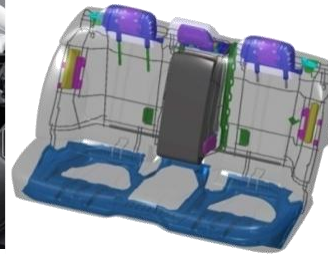
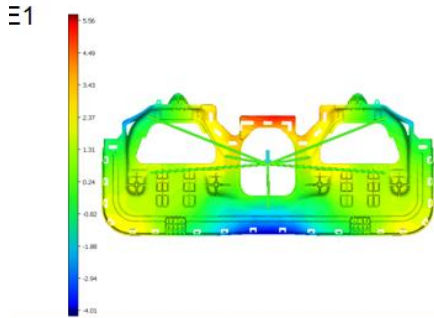


Item	Actual	Nominal	Up Tol	Low Tol	Deviation
Z	-0.0030	0.0300	0.0300	-0.0300	-0.0030
Z	0.0010	0.0300	0.0300	-0.0300	0.0010
Z	-60.9860	-61.0000	0.0300	-0.0300	-0.0140
Z	-10.5460	-10.5000	0.0300	-0.0300	-0.0040

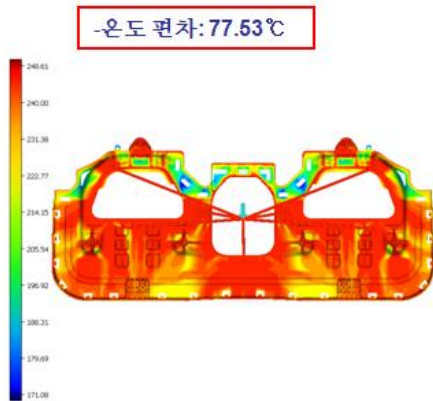
CMM
Measuring

BENCH

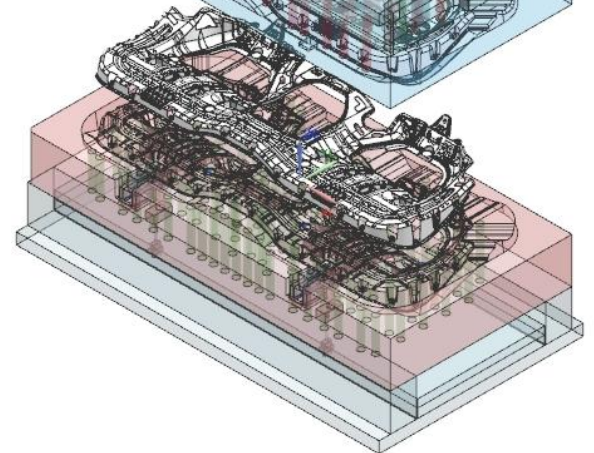
● KH-CAR (KIA)



과
| Z축 방향의 변형은 -4.01mm > 5.56mm



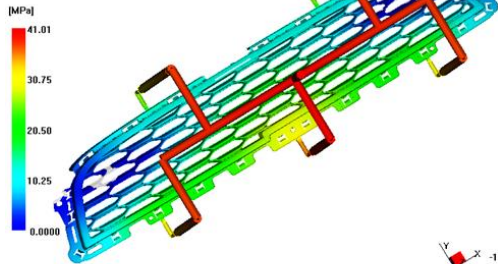
First apply injection parts



R/GRILLE HOUSING

● C-140 (GMK)

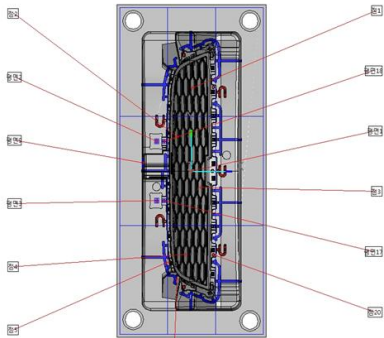
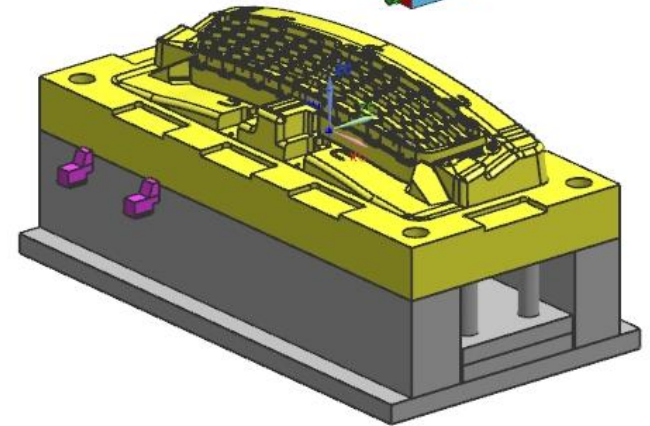
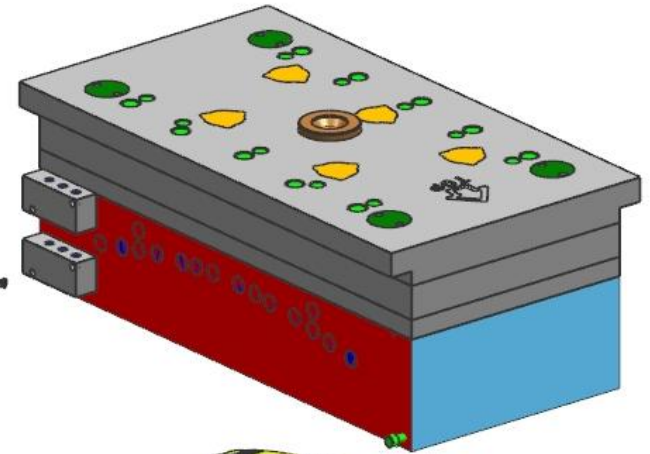
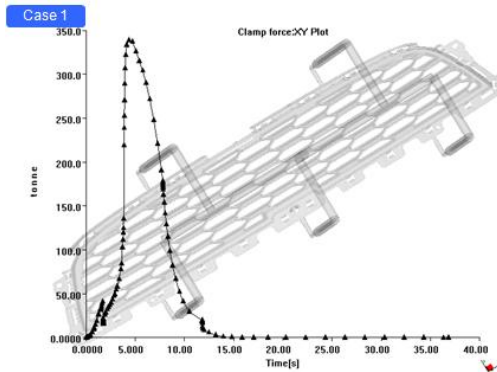
Case 1
Pressure at V/P switchover
= 41.01[MPa]



Autodesk

Scale [400 mm]

-1
13
31

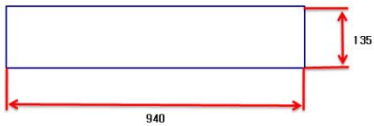
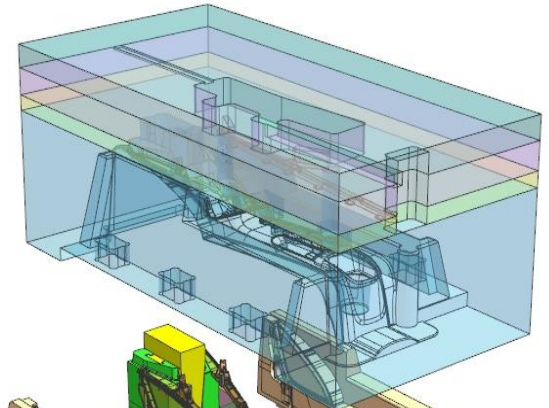


Item	Actual	High Tol	Low Tol	Deviation
Z	0.0060	0.0000	0.0300	-0.0240
Z	-0.0090	0.0000	-0.0300	-0.0090

GMM
Measuring

CONSOLE

● T-300 (GMK)



슬라이드 선행부 두께면적 = 128039

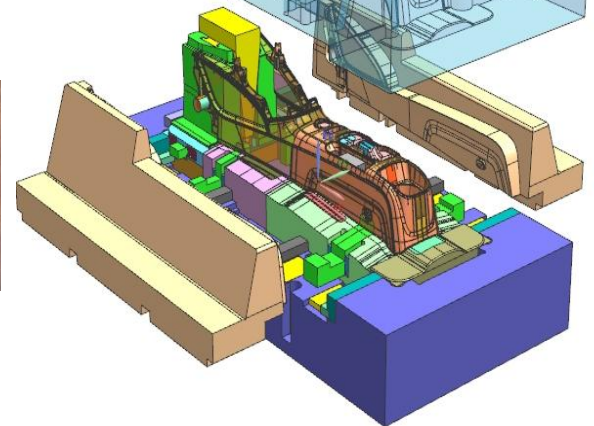
(2) 캐비티 바닥이 일체인 경우

$$h = \sqrt{\frac{C P a^3}{E \delta}} =$$

h= 속편의 두께(mm)
 p= 선행압력(kg/cm²)
 a= 캐비티의 길이(mm)
 C= l/a 에 의해서 정해지는 상수로, 표에 의해 구한다.
 E= 영 계수, 강철의 경우 2.1×10^6 (kg/cm²)
 δ= 허용 휨량(mm)
 l= 보의 길이(mm)

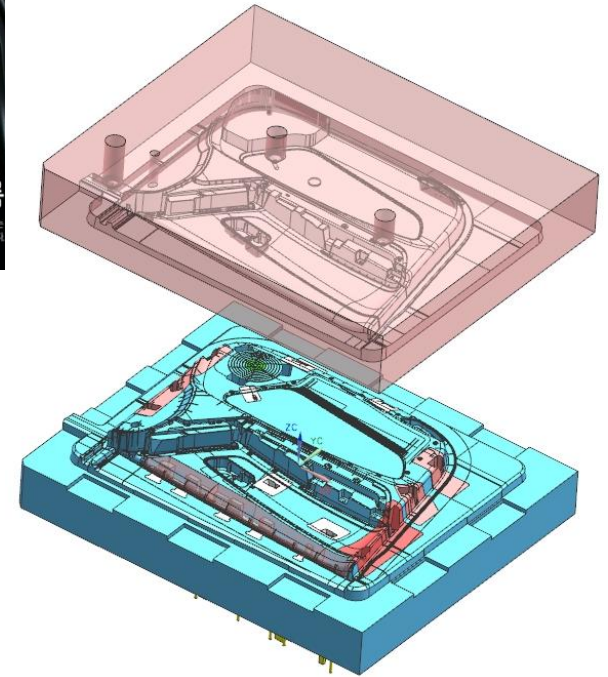
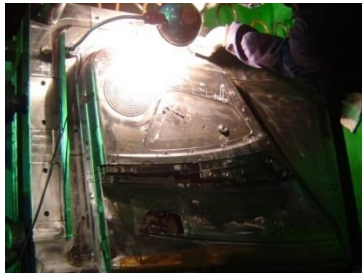
d = 700
 a = 135
 c = 0.15
 e = 2100000
 δ = 0.08(일반적 적용)
 l = 940

H = 60(59.2)



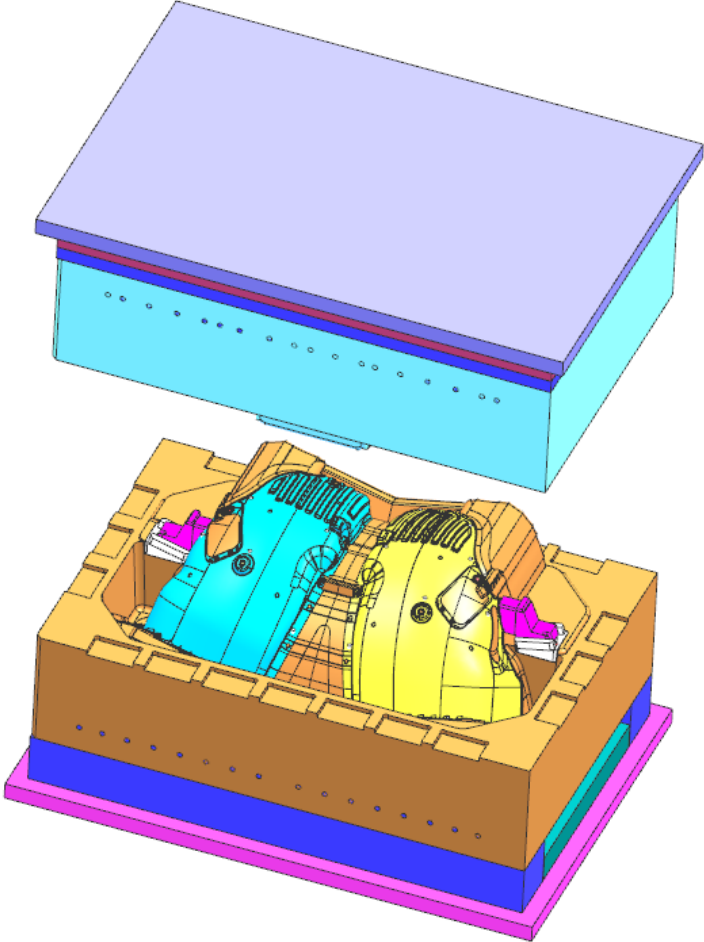
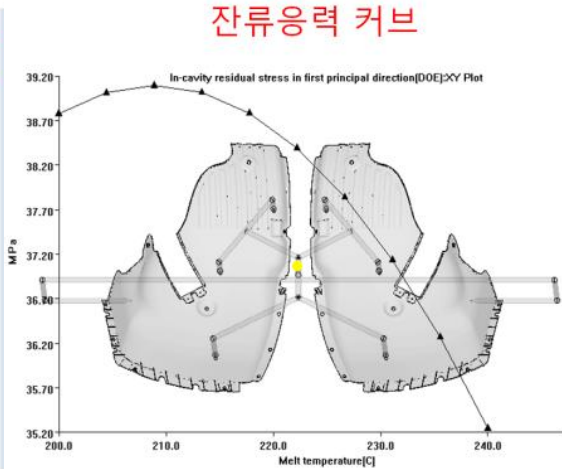
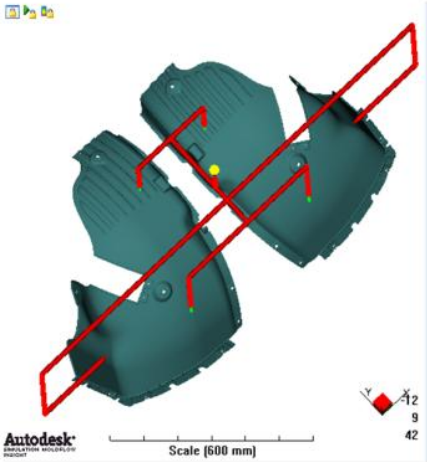
FRT DOOR TRIM

● C-200 (SSANYONG)



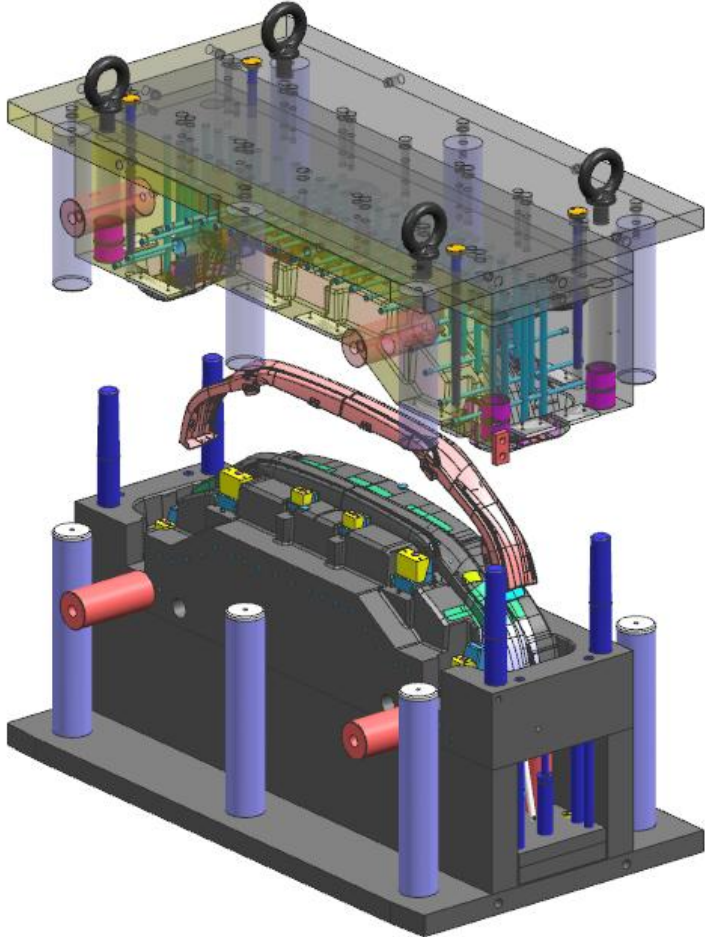
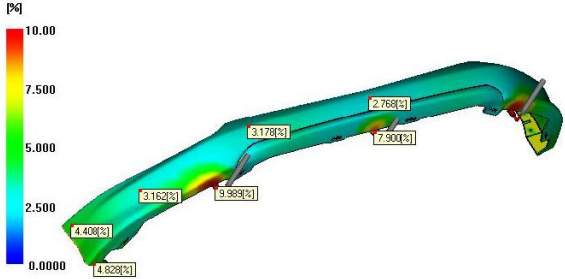
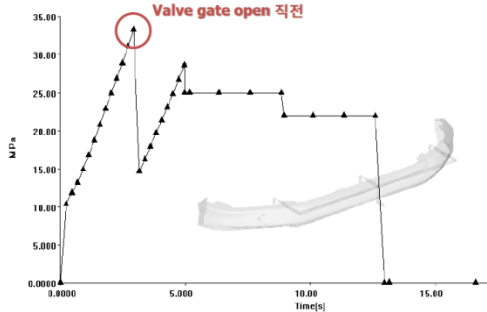
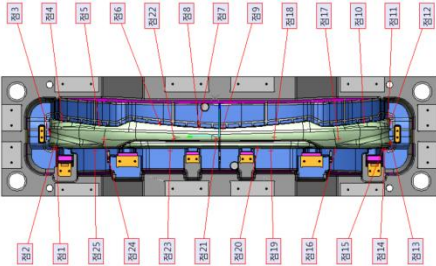
GUARD FRT WHEEL FRT PIECE LH/RH

● LF-CAR (HYUNDAI)



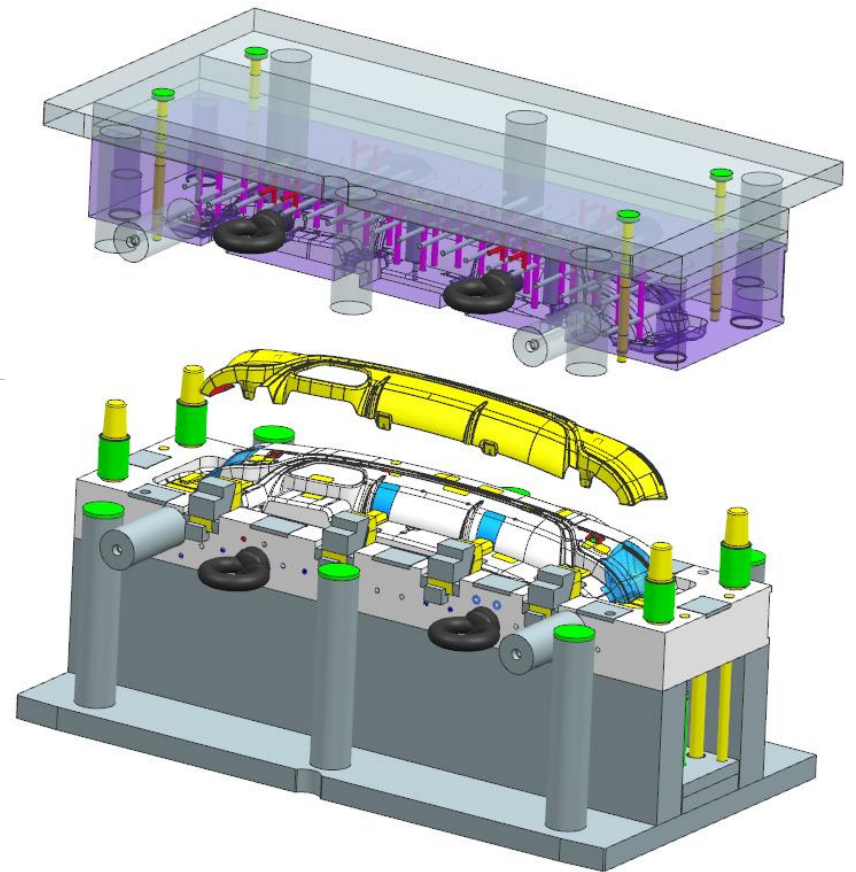
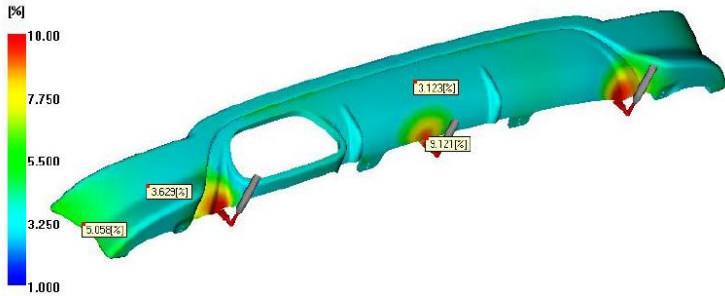
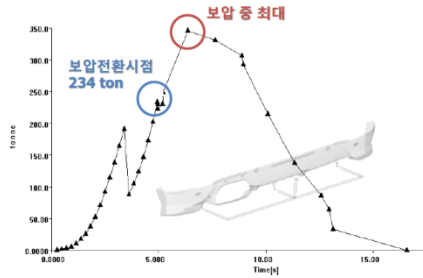
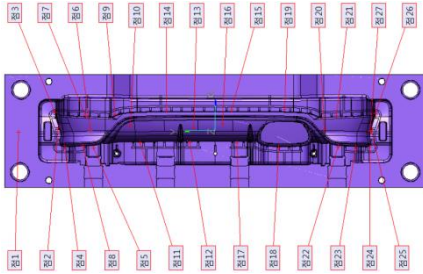
FRONT BUMPER

● M2XX ACCESSORYEU/NA (GMK)



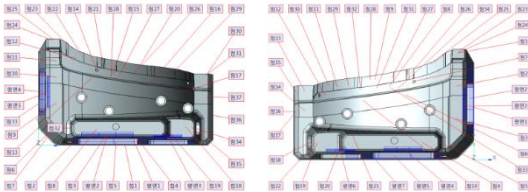
REAR BUMPER

● M2XX ACCESSORYEU/NA (GMK)

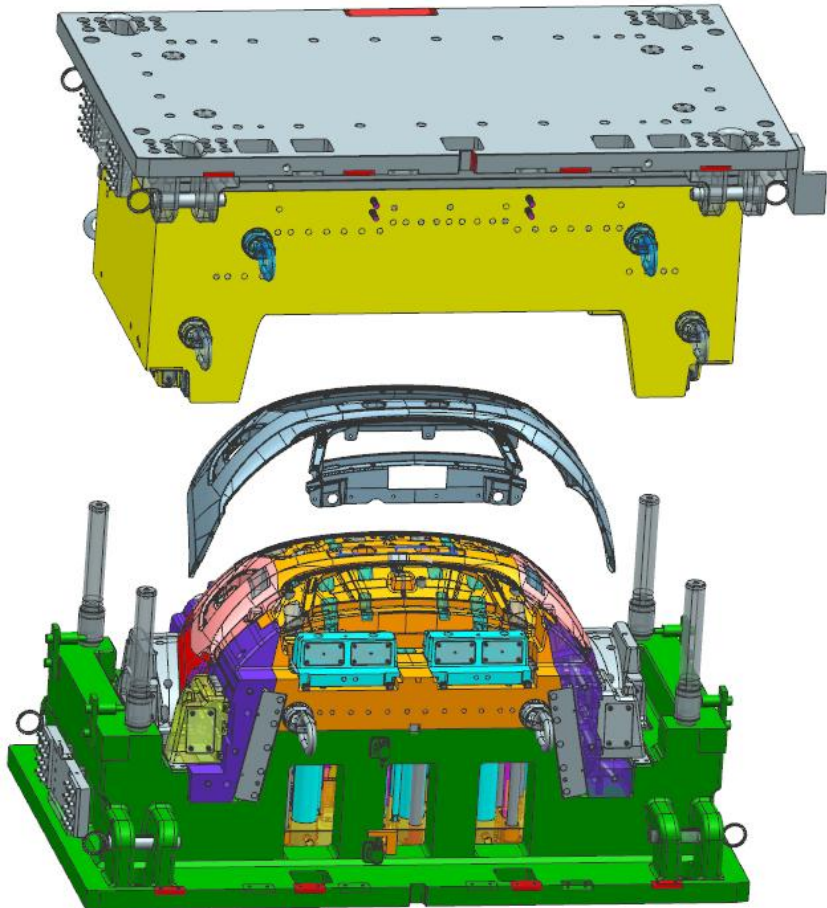
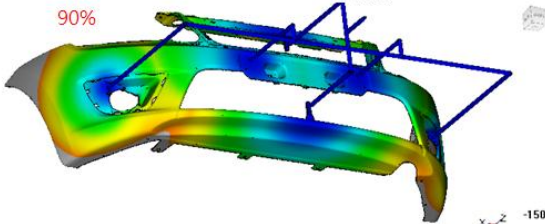


FRONT BUMPER

● AUTO VAZ 2191 (RUSSIA)




Fill time
= 2.906[s]
[s]
3.322
2.491
1.661
0.8304
0.0000



Certifications

SUPPLIER QUALITY SUPPLIER QUALITY SUPPLIER QUALITY SUPPLIER QUALITY SUPPLIER QUALITY



CERTIFICATE OF SUPPLIER QUALITY
인증번호 : PLM184

SQ 인증서


회 사 명 : (주)제이엠티
대표자명 : 한상욱 인 증 업 종 : 사출금형
사업자번호 : 1238605447 인 증 등 급 : B
업 체 코드 : #44GE 사업장코드 : #44GE01
회 사 주 소 : 경기도 화성시 팔탄면 노하리 621-34

**협력사 품질평가 규정에 인거
상기와 같이 SQ(협력사 품질보증)
요구사항에 적합함을 인증합니다.**

인증일자 : 2006년 11월 13일
유효일자 : 2015년 12월 31일 까지

- 주 관 : (주)KOMOS
- 후 원 : 현대·기아자동차

SQ(HMC/ KMC)




International Industrial Certification
Accreditation by the Joint Accreditation System of Australia and New Zealand
www.jas-anz.org/register

(주) 제이엠티 (JEMT)
경기도 화성시 팔탄면 노하리 621-34
위 회사의 품질경영시스템이 아래의 인증규격과 인증범위의
요구사항에 적합함을 인증함

ISO 9001 : 2008 / KS Q ISO 9001 : 2009

인 증 범 위 :
금형의 설계, 개발 및 제조




EAC: 18 NACE: DK 29.56

인증번호 : JK-12104
발 행 일 : 2006년 11월 14일
재발행일 : 2012년 11월 13일
유효기간 : 2015년 11월 12일

Approved by 한상욱
원장 한원중

본 경영시스템 인증서는 상기 명시된 인증정보에 적용되며
일일할 수 있으며 IAF MLA 회원기관인 JAS-ANZ에서
인정된 인증사로서 아이아이비인증원의 지적 재산입니다.
규정에 따른 사후관리 실시를 정해진 기간 내에 받지
않을 경우 인증이 취소됩니다.



JAS-ANZ
www.jas-anz.org/register

ISO9001/14000(IAF)

GM Global Approved Tool Source Certification



Region	Certified Tool Source
South Korea	JEMT
GMKR-008	Approved Tonnage
	<1,500Ton

This tool shop is certified that
the recipient has successfully completed
all approval requirements.

Onsite Assessment Date
2010.08.18




Seong-Jin Cho
GM Korea ME PPC Director

Yung-Ki Ham
GM Korea MEC Executive Director




Global Paint & Polymers Center

GPPC(GMK)

Qualifications

Quality Qualification

2003.12	Certified ISO 9001/14001
2004.06	Acquired S.S.Q
2006.11	Acquired S.Q
2009.01	Venture Business Quality Certificate
2010.08	Acquired GMK G.P.P.C

Certificate of Patent

Acquired the patent registration application for mold inner pressure buffer structure and two others.

Plastic molding mold related two items.

Signed a contract with Japan's Shingiyeon Co., Ltd for advising manufacturing technology for steering wheel/ wheel mold.

Location

